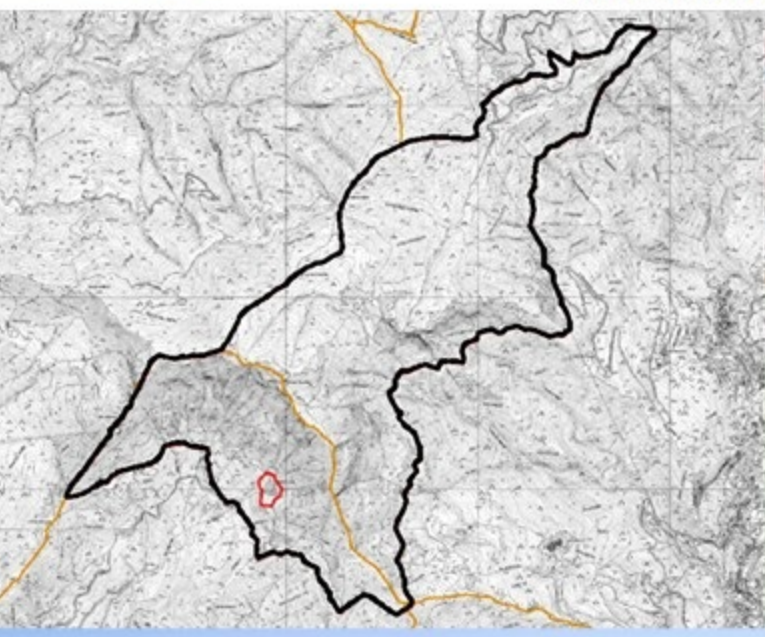


Programma di Sviluppo Rurale 2014 – 2020
 «Fondo europeo agricolo per lo sviluppo rurale: l'Europa investe nelle zone rurali»
 Sottomisura 7.1 – Piani di Tutela e Gestione dei siti natura 2000



Ente di Gestione
 Città Metropolitana di Genova - Direzione Ambiente
Redazione Piano
 Atene s.r.l.
Supporto tecnico-scientifico
 Temi s.r.l.

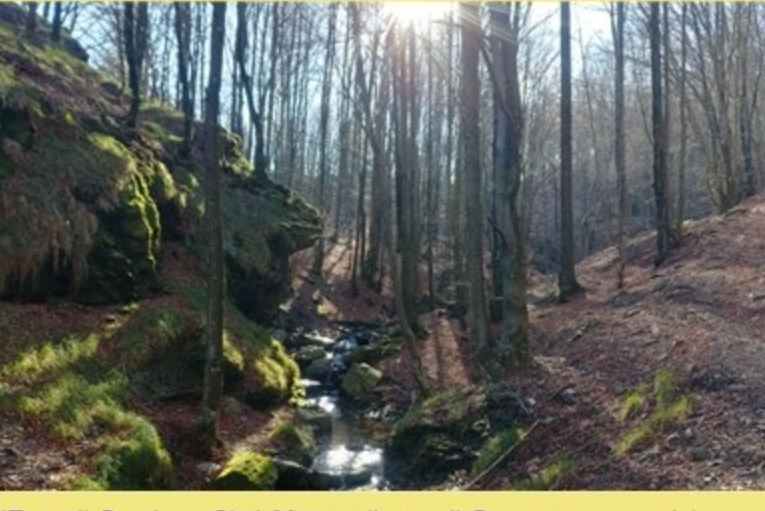
Piano di Gestione Zona Speciale di Conservazione
Monte Caucaso
IT 1331811



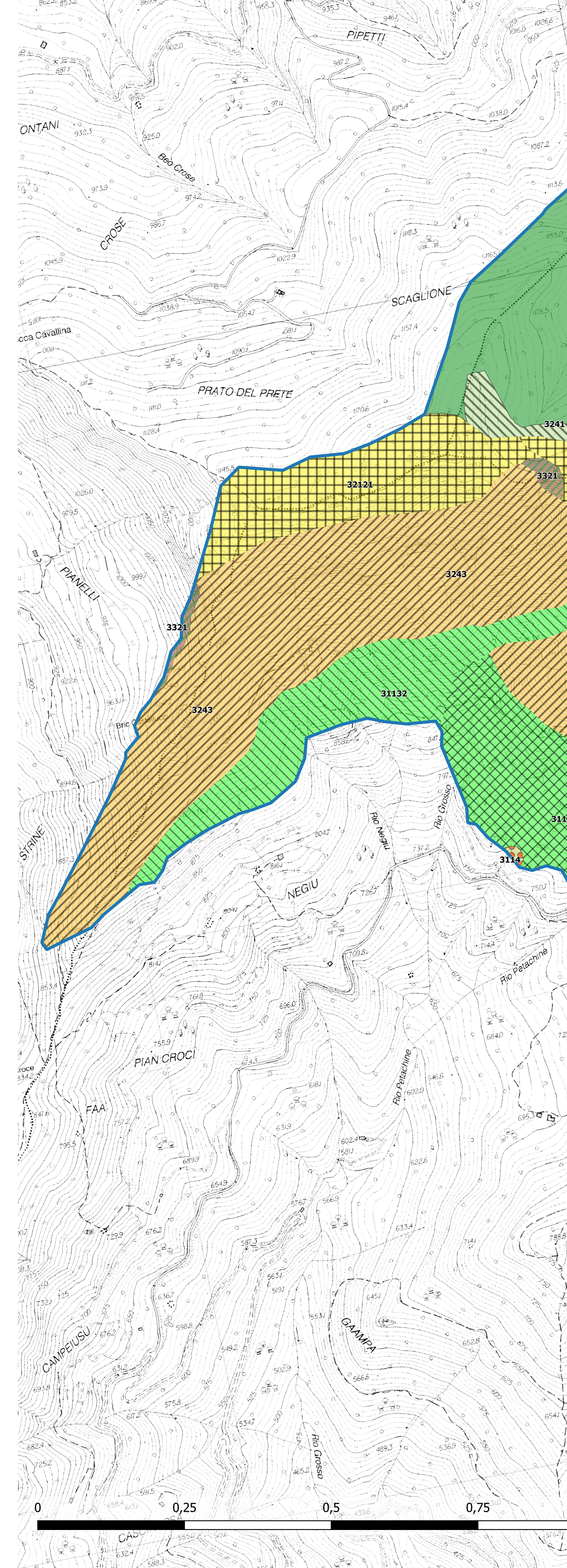
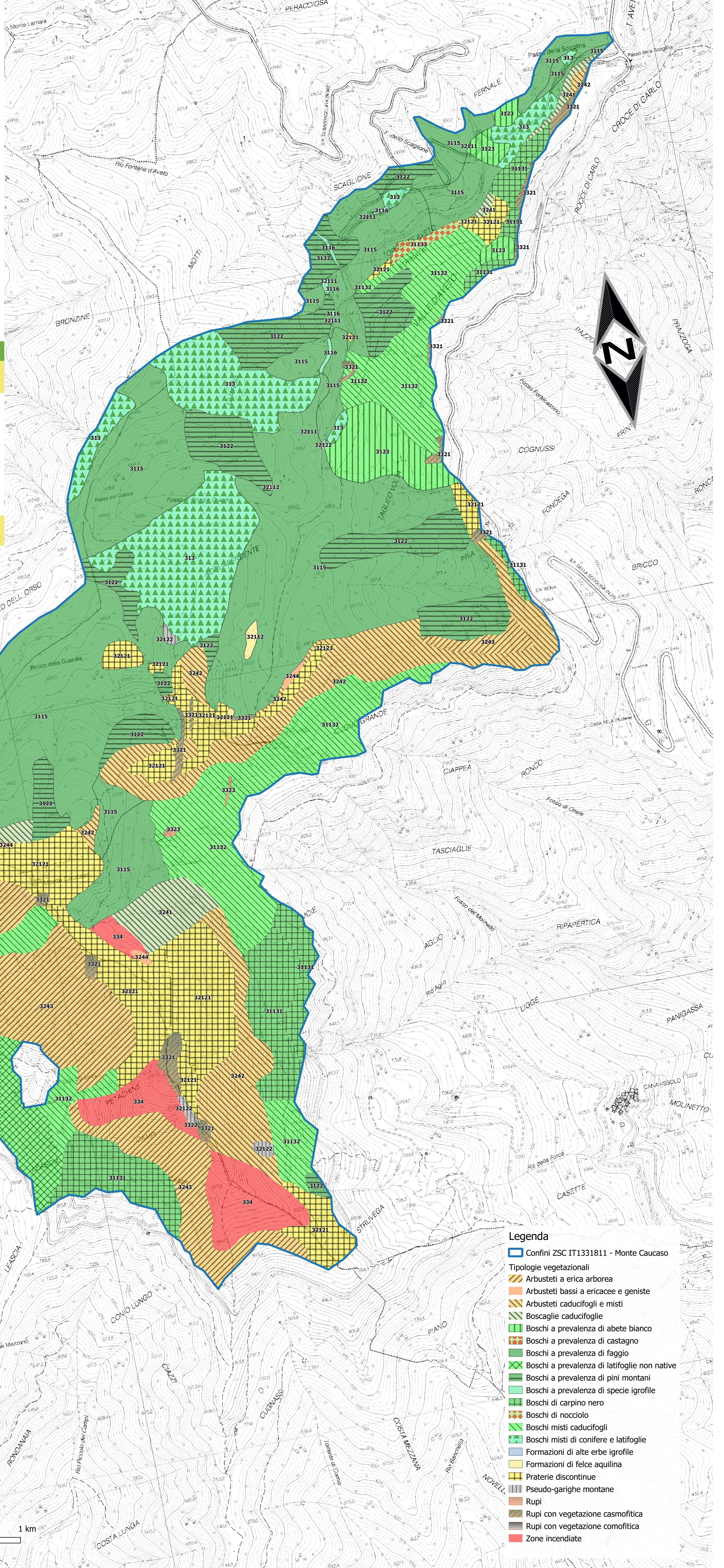
Coordinamento generale
 Gianluca Bertucci (Atene)
 Mauro Bruzzone (Città Metropolitana)
 Agostino Ramella (Città Metropolitana)
 Ornella Rizzo (Città Metropolitana)
 Franca Stragapede (Città Metropolitana)
Coordinamento tecnico-operativo
 Alessandro Bardi (Temi)
 Susanna Feltri (Città Metropolitana)
























QUADRO CONOSCITIVO
 Scala 1:5000
Tipologie vegetazionali

Aspetti naturalistici
 Enrico Calvario, Riccardo Copiz, Marco Di Domenico, Luca Maria Luselli, Simone Marinelli, Francesco Pinchera, Nicola Policiano, Claudia Turcato (Temi)
Quadro geologico
 Giovanni Rizzi (Temi)
Inquadramento storico-architettonico
 Gianluca Bertucci (Atene)
Cartografia e GIS
 Cecilia Baschetti, Mattia Azzella (Temi)
Aspetti pianificatori, urbanistici, valutazione di incidenza
 Cristiana Arzà, Elisabetta Bosio, Piero Garibaldi, Maria Giovanna Lonati (Città Metropolitana)
Quadro economico e percorsi partecipativi
 Marco Nucorini (Temi), Gianluca Bertucci (Atene)



Adottato con delibera dell'Ente di Gestione Città Metropolitana di Genova n. del Allegato n. alla DGR n. del



- Legenda**
-  Confini ZSC IT1331811 - Monte Caucaso
 - Tipologie vegetazionali**
 -  Arbusteti a erica arborea
 -  Arbusteti bassi a ericacee e geniste
 -  Arbusteti caducifogli e misti
 -  Boscaglie caducifoglie
 -  Boschi a prevalenza di abete bianco
 -  Boschi a prevalenza di castagno
 -  Boschi a prevalenza di faggio
 -  Boschi a prevalenza di latifoglie non native
 -  Boschi a prevalenza di pini montani
 -  Boschi a prevalenza di specie igrofile
 -  Boschi di carpino nero
 -  Boschi di nocciuolo
 -  Boschi misti caducifogli
 -  Boschi misti di conifere e latifoglie
 -  Formazioni di alte erbe igrofile
 -  Formazioni di felce aquilina
 -  Praterie discontinue
 -  Pseudo-garighe montane
 -  Rupi
 -  Rupi con vegetazione casmofitica
 -  Rupi con vegetazione comofitica
 -  Zone incendiate